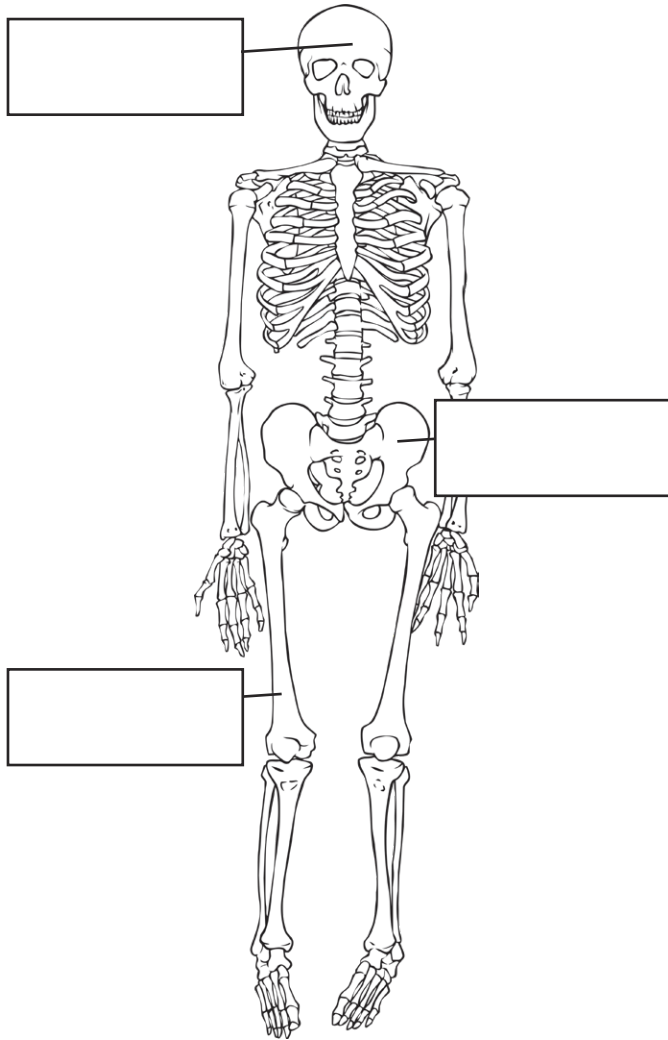


Year 3 Animals, Including Humans

Add labels to this diagram of the human skeleton.



Draw a line from the nutrient to the job it does.

carbohydrates

provides energy

protein

keeps you healthy

fibre

helps growth and repair

fats

help to digest food

vitamins and minerals

provides energy

What **three** jobs does the skeleton do?

1. _____

2. _____

3. _____

What is the term used to describe an animal that does not have a backbone?

Circle the type of fat that is less healthy and should only be eaten in small amounts.

saturated fats

unsaturated fats

Year 3 Animals, Including Humans

Draw a line from the food to the nutrient it contains.

pasta

fibre

chicken

carbohydrates

apple

protein

olive oil

fats

wholegrain cereal

vitamins

Fill in the missing words.

Skeletal muscles work in _____
to move the bones they are attached to. They
do this by _____ (getting
shorter) and _____
(getting longer).

Write **true** or **false** after each of these sentences.

Like plants, animals can make their own food.

Animals need food, air and water to stay alive.

All fats are unhealthy and should only be eaten in very small amounts.

Water is needed to carry nutrients to cells around the body.

Fill in the missing words using either voluntary or involuntary.

The heart pumping is an example of _____ muscle movement.

Lifting a weight is an example of _____ muscle movement.

Kicking a ball is an example of _____ muscle movement.

Digestive system muscles digesting food is an example of _____ muscle movement.

Draw a line from the animal to the type of skeleton it has.

dog

endoskeleton

scorpion

exoskeleton

human

jellyfish

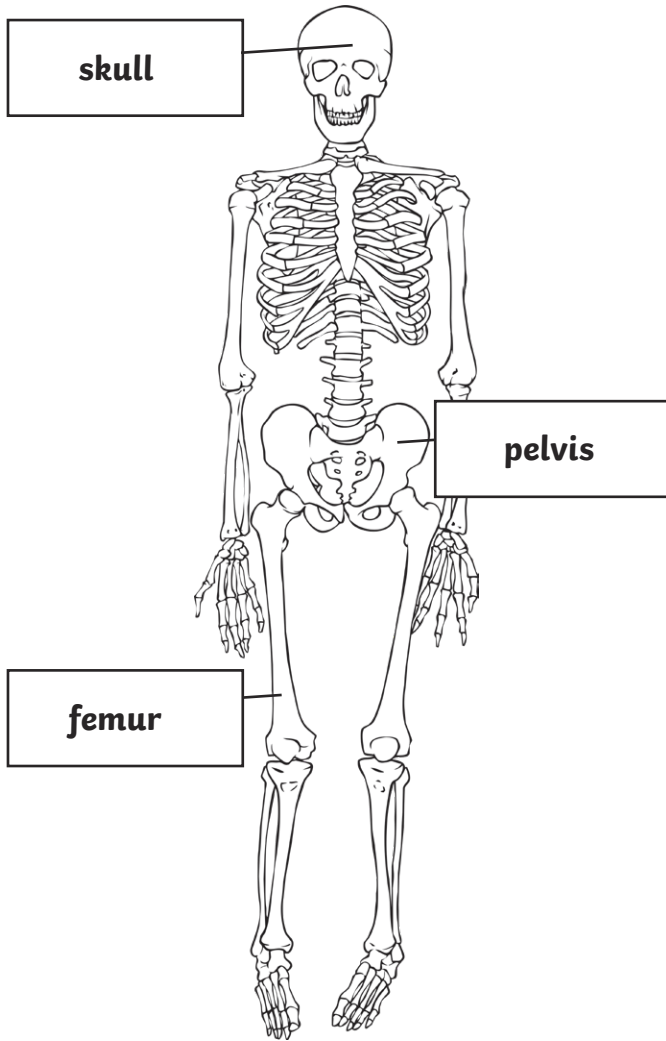
hydrostatic skeleton

earthworm

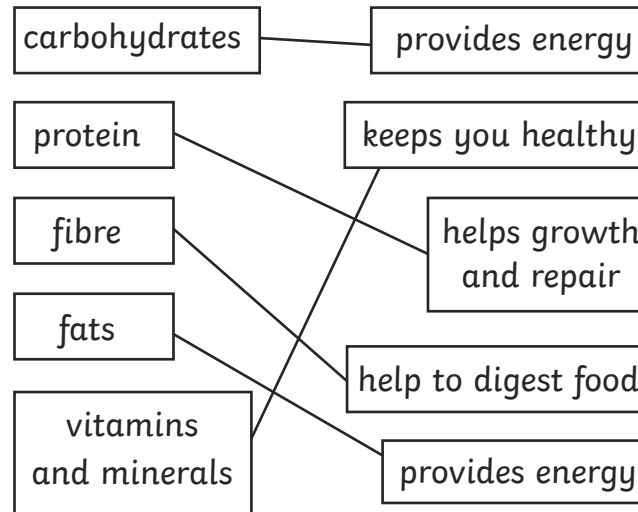
lobster

Year 3 Animals, Including Humans Answers

Add labels to this diagram of the human skeleton.



Draw a line from the nutrient to the job it does.



What **three** jobs does the skeleton do?

1. **The skeleton protects the vital organs inside the body.**
2. **The skeleton works with the muscular system to allow the body to move.**
3. **The skeleton holds the body up and stops it from falling to the floor.**

What is the term used to describe an animal that does not have a backbone?

invertebrate

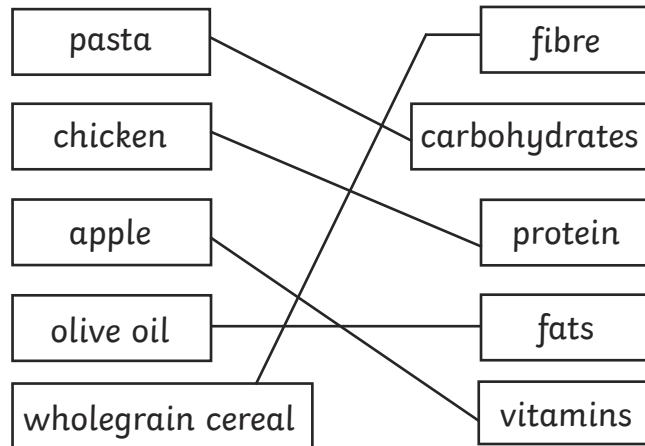
Circle the type of fat that is less healthy and should only be eaten in

saturated fats

unsaturated fats

Year 3 Animals, Including Humans Answers

Draw a line from the food to the nutrient it contains.



Fill in the missing words.

Skeletal muscles work in pairs to move the bones they are attached to. They do this by contracting (getting shorter) and relaxing (getting longer).

Write **true** or **false** after each of these sentences.

Like plants, animals can make their own food.

false

Animals need food, air and water to stay alive.

true

Fill in the missing words using either voluntary or involuntary.

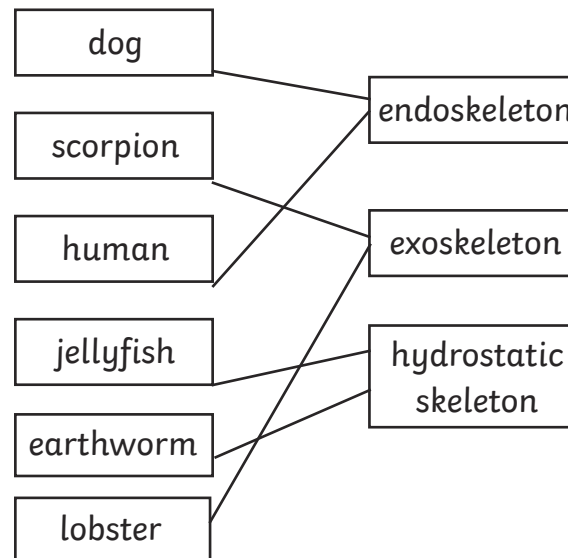
The heart pumping is an example of involuntary muscle movement.

Lifting a weight is an example of voluntary muscle movement.

Kicking a ball is an example of voluntary muscle movement.

Digestive system muscles digesting food is an example of involuntary muscle movement.

Draw a line from the animal to the type of skeleton it has.



All fats are unhealthy and should only be eaten in very small amounts.

false

Water is needed to carry nutrients to cells around the body.

true